

BOSCH

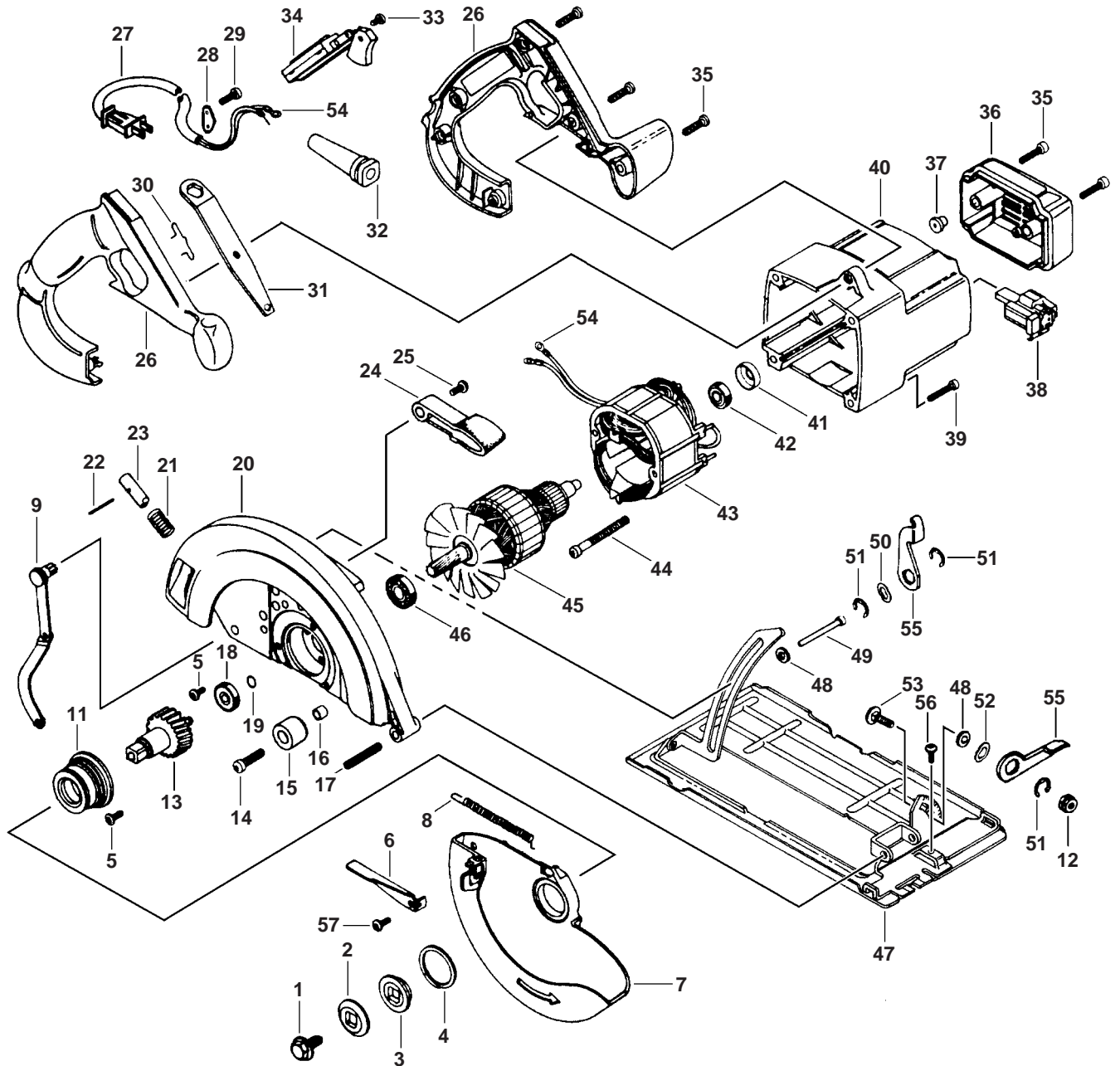
January 1997
INDUSTRIAL

8-1/4" CIRCULAR SAW

Model 0601656139

1656

(.139)



1656 (.139) 8-1/4" CIRCULAR SAW

Pos.	Part Number	Description {Qty}	F/C	Pos.	Part Number	Description {Qty}	F/C
1	2 610 346 554	Blade Bolt	85	31	2 610 351 201	Blade Wrench	9
2	2 610 355 550	Outer Flange	91	32	2 610 313 327	Strain Relief	11
3	2 610 350 668	Inner Flange 5/8"	91	33	2 610 901 971	Screw	89
4	2 610 341 359	Retaining Ring	89	34	2 610 321 608	Switch On/Off	34
5	2 610 341 365	Screw {6}	89	35	2 610 341 364	Screw {8}	89
6	2 610 351 898	Guard Lever	9	36	2 610 905 311	Motor Housing Cover	70
7	2 610 350 729	Lower Guard	92	37	2 610 350 655	Rubber Bumper {2}	9
8	2 610 351 246	Guard Spring	27	38	2 610 355 594	Brush & Holder Set	25
9	2 610 354 607	Swivel Arm	9			(set contains 2 each)	
11	2 610 350 678	Gear Cover w/Bearing	70	39	2 610 341 335	Screw {4}	89
12	2 610 901 988	Nut	89	40	2 610 903 196	Motor Housing	71
13	2 610 350 657	Shaft w/Gear	32	41	2 610 326 023	Rubber Bearing Sleeve	82
14	2 610 347 100	Screw	89	42	2 610 017 348	Ball Bearing	60
15	2 610 341 394	Guard Stop	9	43	2 610 351 836	Field 120V	22
16	2 610 341 366	Spacer	9	44	2 610 352 806	Screw {2}	89
17	2 610 341 332	Roll Pin	89	45	2 610 908 397	Armature w/Fan 120V	AW
18	2 610 010 409	Ball Bearing	56	46	2 610 350 311	Ball Bearing	61
19	2 610 350 683	Retaining Ring	89	47	2 610 350 691	Foot Plate Assembly	88
20	2 610 905 004	Upper Guard	72	48	2 610 351 293	Washer {2}	65
21	2 610 350 667	Spring	27	49	2 610 904 102	Bolt	89
22	2 610 020 656	Roll Pin	66	50	2 610 313 808	Washer	65
23	2 610 351 295	Lock Pin	81	51	2 610 341 354	Circlip {3}	89
24	2 610 355 385	Lift Lever	9	52	2 610 068 566	Washer	65
25	2 610 354 611	Screw	89	53	2 610 017 262	Bolt	89
26	2 610 904 144	Handle Set	74	54	2 610 316 596	Terminal Ring {4}	10
27	3 604 460 514	Cord 120V 16/2	11	55	2 610 901 987	Lock Lever {2}	81
28	2 610 364 033	Cord Clamp	89	56	2 610 350 698	Screw	89
29	2 610 326 578	Screw {2}	89	57	2 610 328 924	Screw	89
30	2 610 350 663	Clip Spring	9	+ 63	2 610 968 261	Nameplate	9

Service Notes:

BOSCH April 1998 TECHNICAL BULLETIN	Section 7 - Saws	model(s) affected
	"amp rating change"	1655 1656

To: All Authorized and Factory Service Centers,
 Field Sales and Internal Support Personnel

Re: Amp Rating Change for models 1655 (060 1655 139)
 1656 (060 1656 139)

Please insert this bulletin into the "Technical Bulletins" section of your Bosch Parts Manual, only after making any additions or notes to your Illustrated Parts List(s).

Please be advised the we have changed the amp rating on the above listed models from 13 amps to 15 amps. The following corrections to your Illustrated Parts Lists are necessary to insure proper repairs.

<u>Model(s)</u>	<u>IPL Date</u>	<u>Pos. No.</u>	<u>Action</u>
1655 (.139)	January 1997	27	Change part number to 3 604 460 515
		27	Change description to Cord 120V 14/2
		28	Change part number to 2 610 993 191
		32	Change part number to 2 610 993 188
		63	Change part number to 2 610 995 481
1656 (.139)	January 1997	27	Change part number to 3 604 460 515
		27	Change description to Cord 120V 14/2
		28	Change part number to 2 610 993 191
		32	Change part number to 2 610 993 188
		63	Change part number to 2 610 995 483

All questions should be directed to your Authorized Service Manager.

Product Service Department